

Papillary Problems

Jean F. Simpson, MD

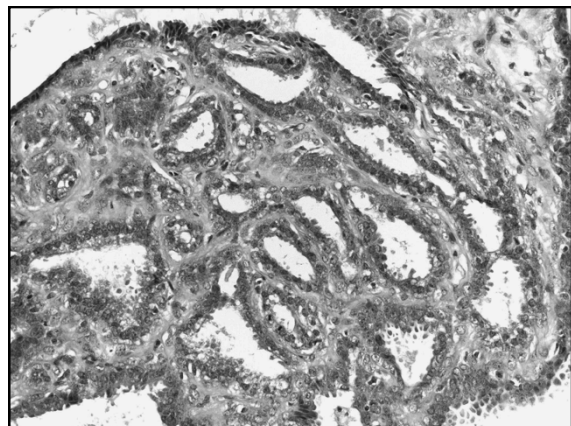
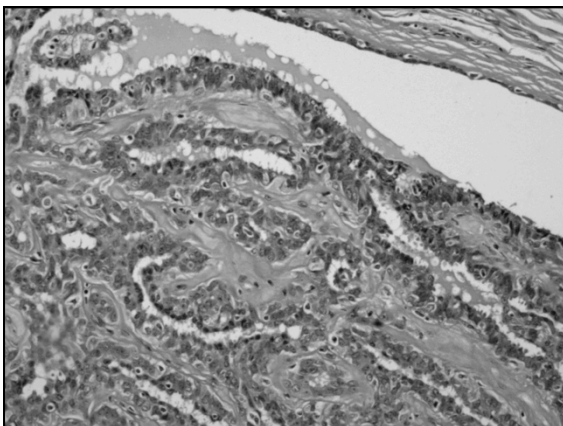
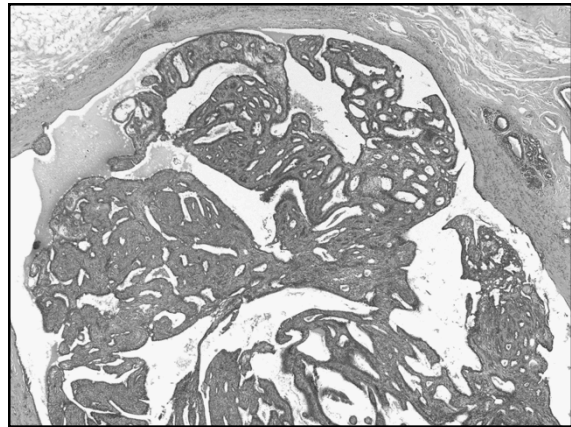
October 1, 2016

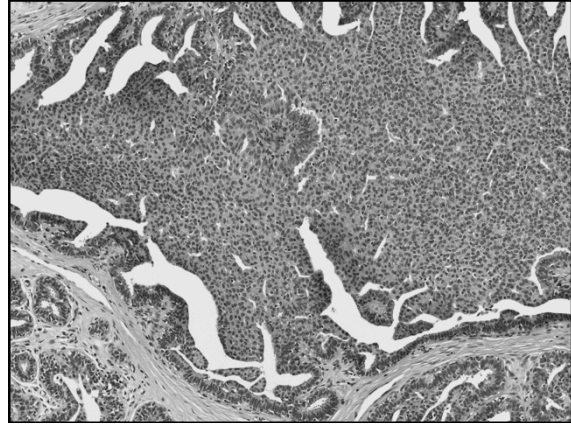
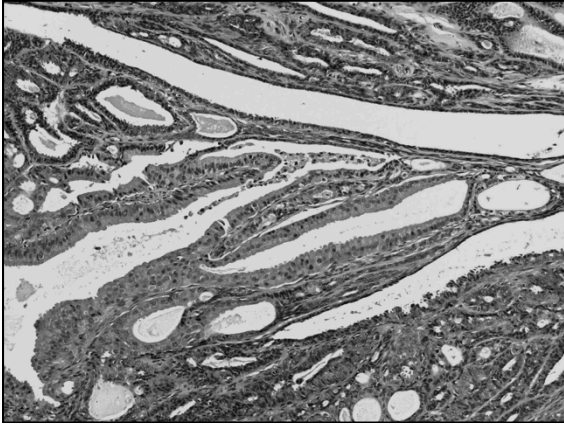
Frequent consultation

- Is it 'atypical'?
- Is it 'papillary carcinoma'?
- Is it invasive?

Epithelial proliferation in papilloma

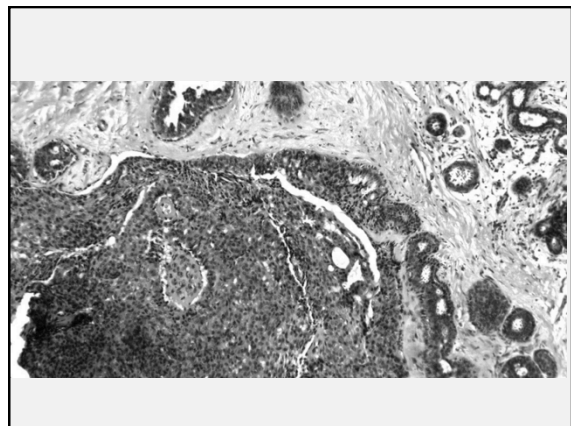
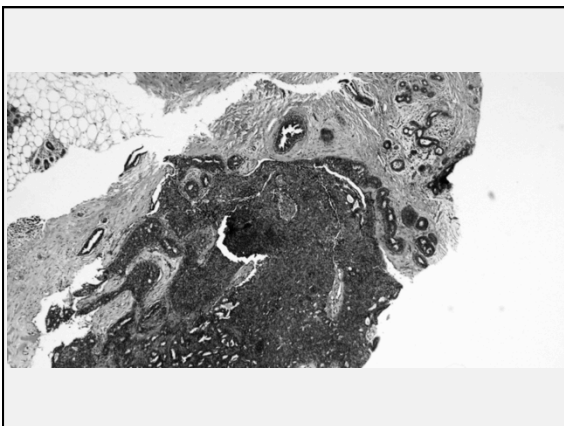
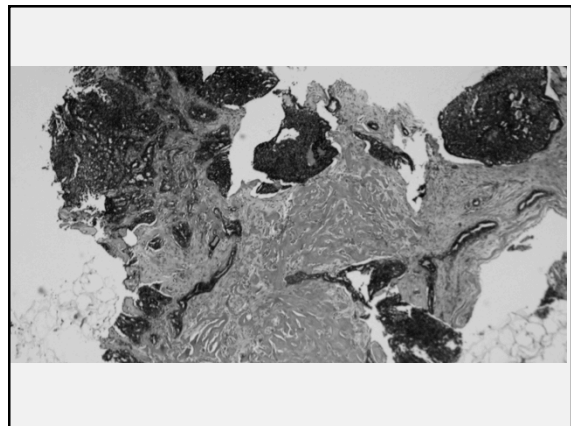
- None
- Usual hyperplasia
- Apocrine change
- Atypical ductal hyperplasia
- Atypical lobular hyperplasia (rare)
- Ductal carcinoma in situ





Relative Risk for Developing Cancer After Benign Biopsy

- No increased risk
 - cysts
 - duct ectasia
 - adenosis
 - hyperplasia, mild
- Slightly increased risk
 - hyperplasia, moderate or florid, no atypia
 - sclerosing adenosis
 - solitary papilloma
- Moderately increased risk
 - Atypical ductal hyperplasia
 - Atypical lobular hyperplasia



Intraductal Papilloma detected on core biopsy

- usually excised
- upgrade rate up to 16% -no information on imaging concordance
- selection bias
- may be symptomatic

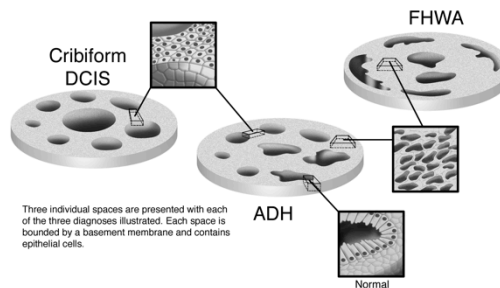
Management of benign intraductal solitary papillomas diagnosed on core biopsy

- 224 cases
- 77 had excision, no upgrades
- 147 did not have excision
 - 100 had stable imaging follow up
 - 47 lost to follow up

Swapp R et al (Mayo Clinic); Ann Surg Oncol 2013

?Atypical Papilloma?

DCIS vs ADH vs FHWA: cytology and histology

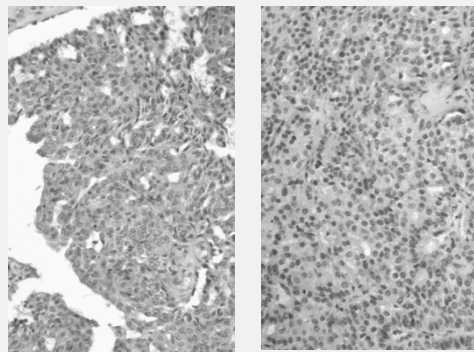


UH vs ADH/LG DCIS

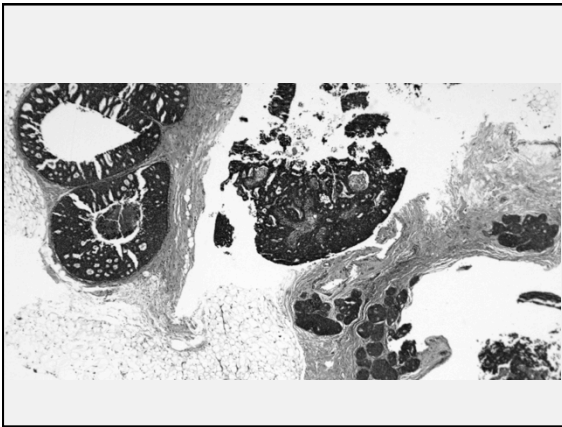
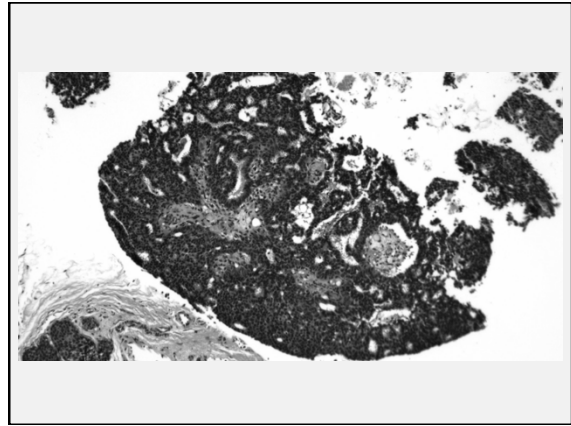
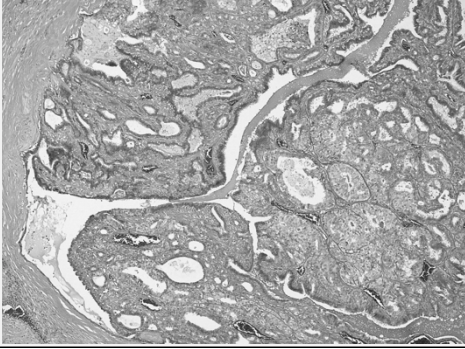
Same rules apply as outside the papilloma setting

Cellular streaming
Overlapping
Cellular heterogeneity

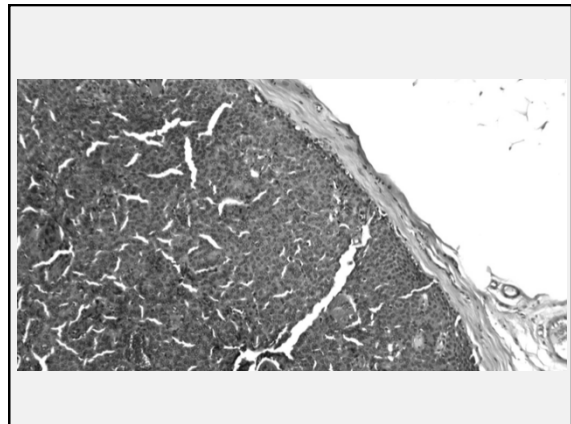
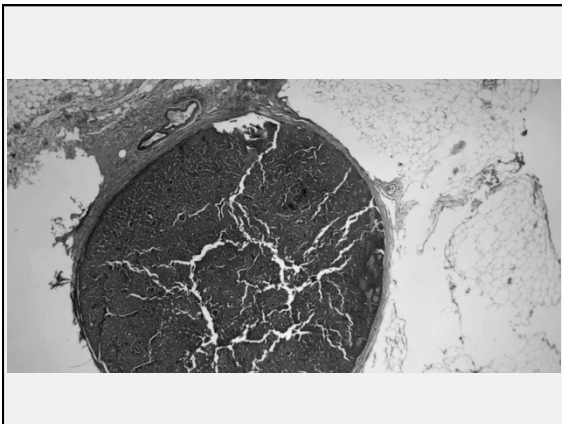
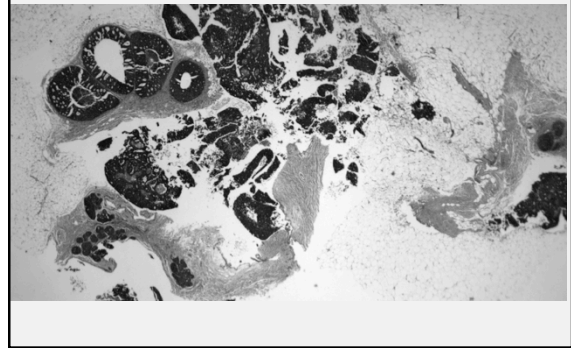
Even cell placement
Uniform population
Rigid architecture

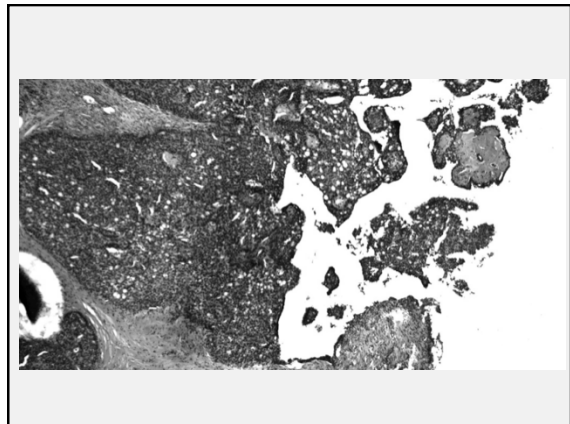
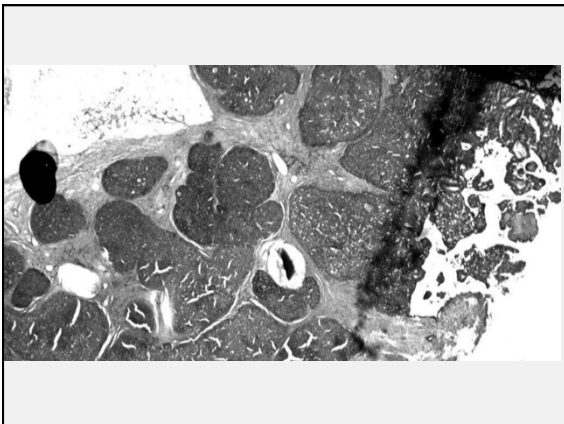
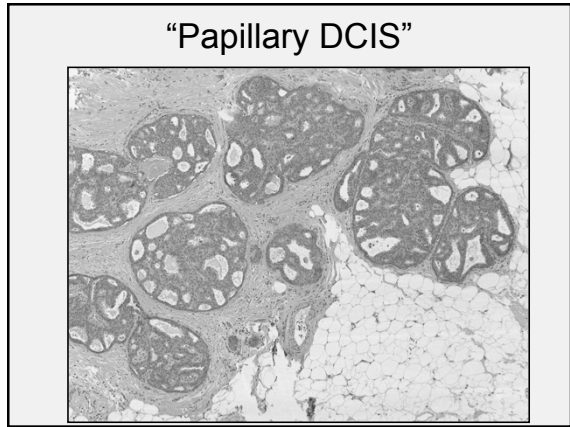
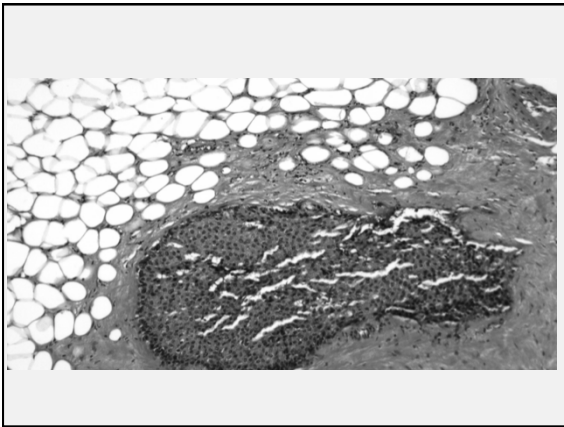
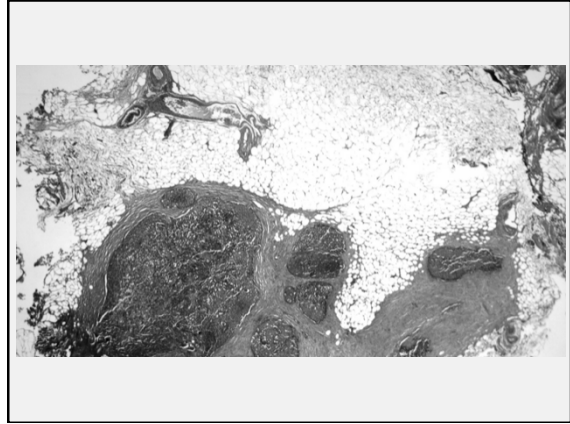
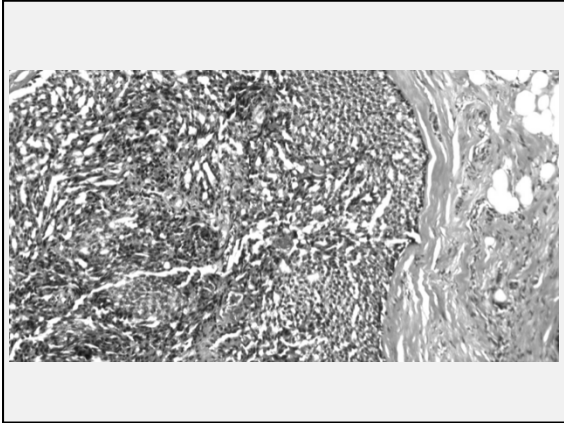


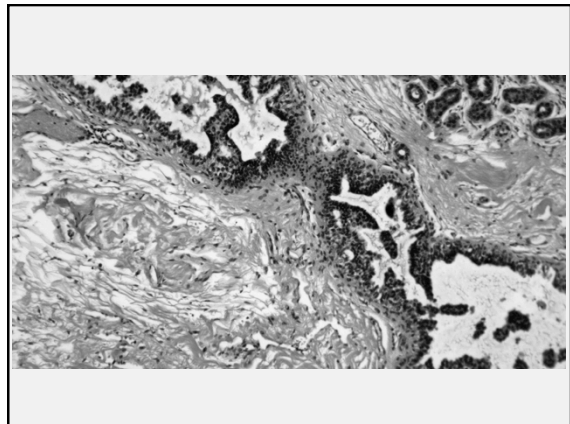
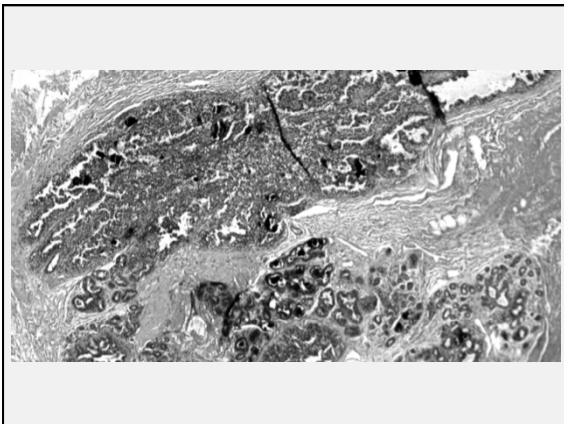
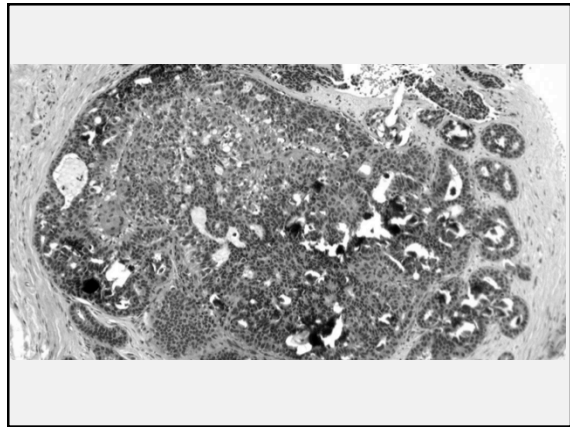
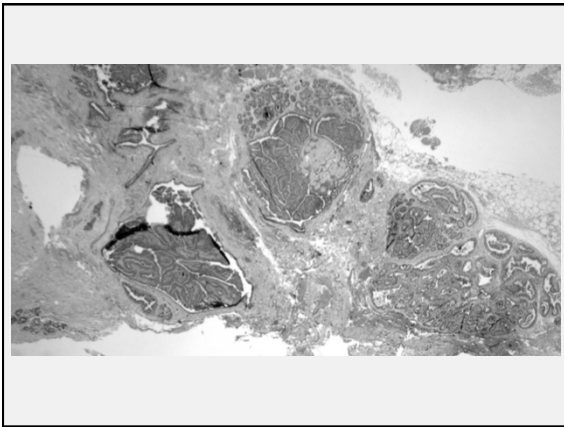
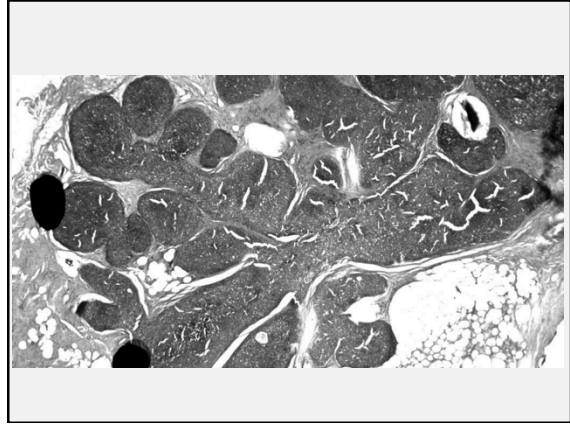
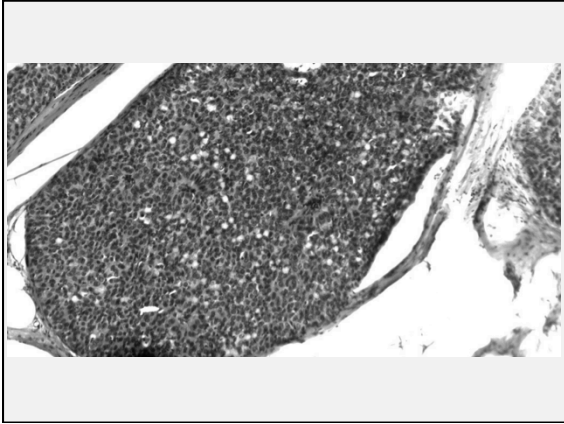
ADH in papilloma

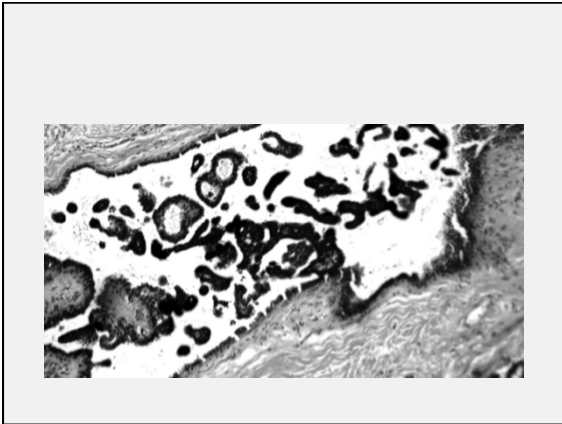


DCIS INVOLVING INTRADUCTAL PAPILOMA AND ADJACENT DUCTS

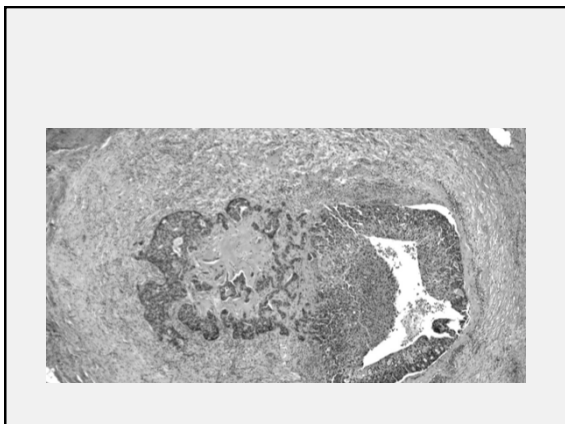
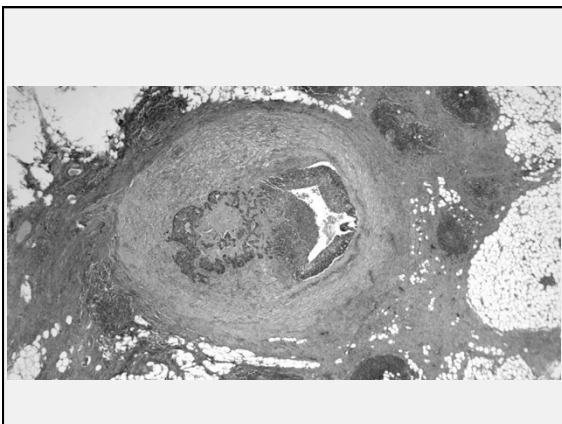
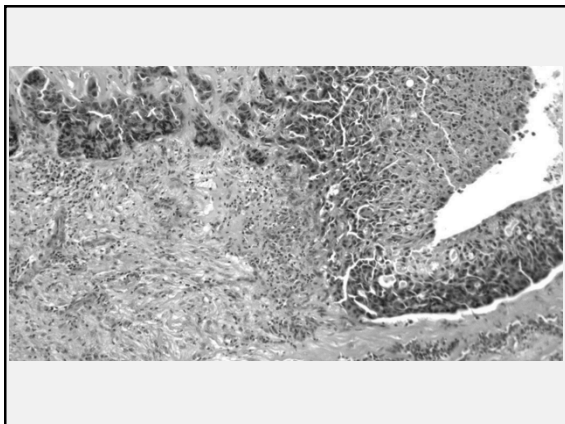
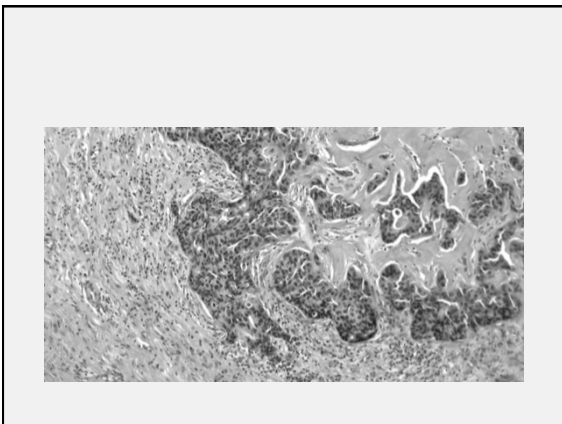


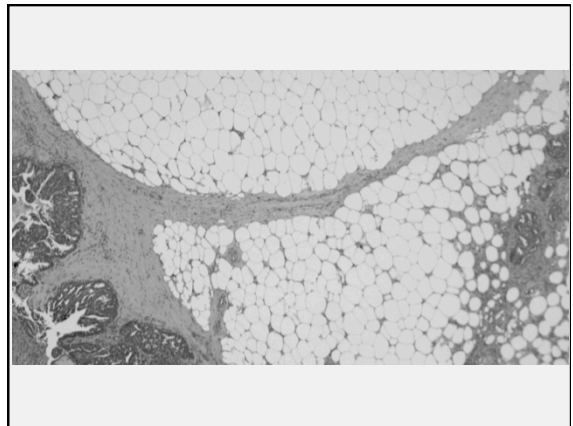
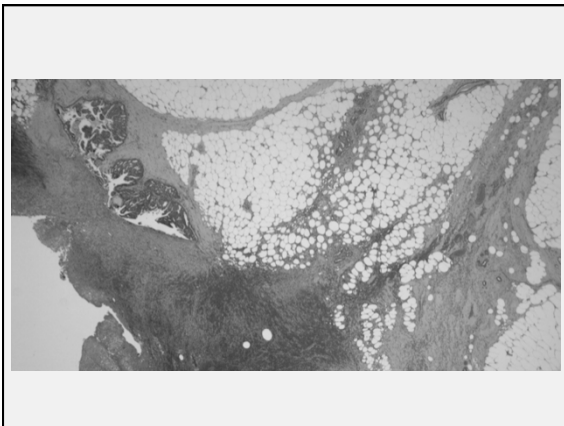
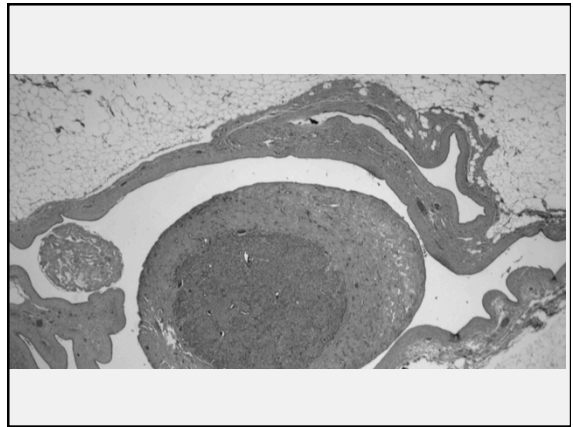
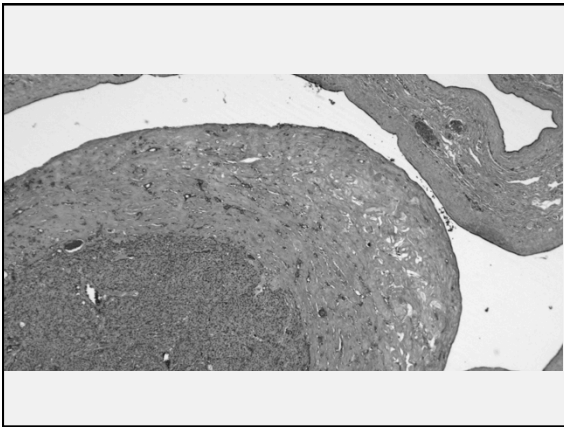
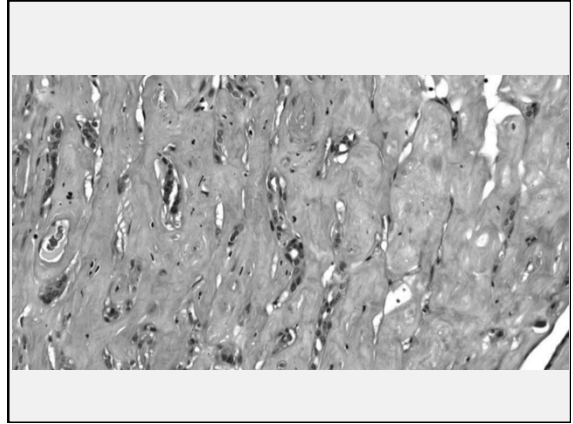
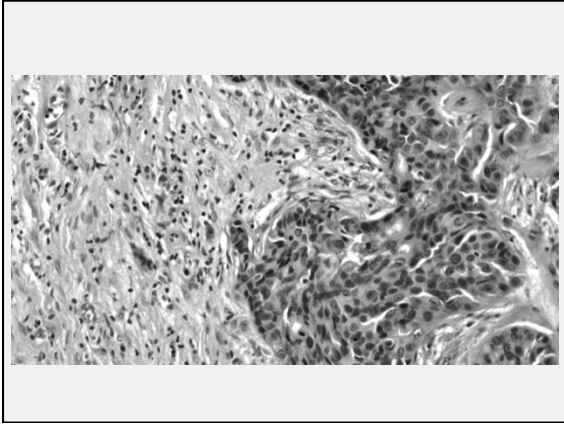


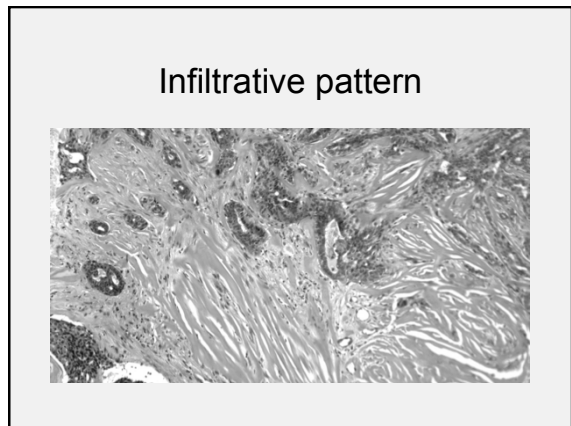
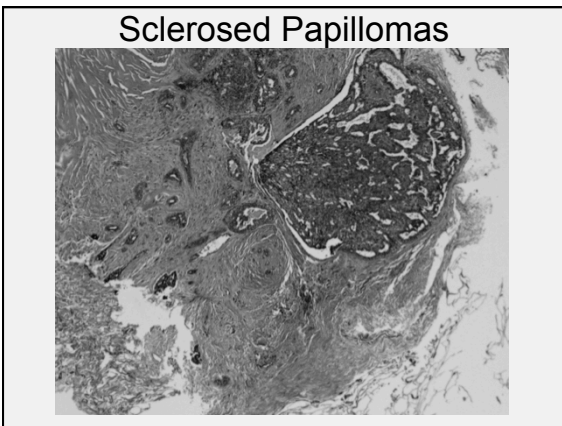
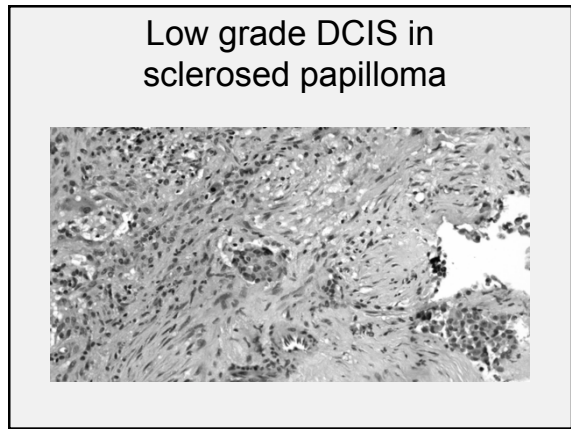
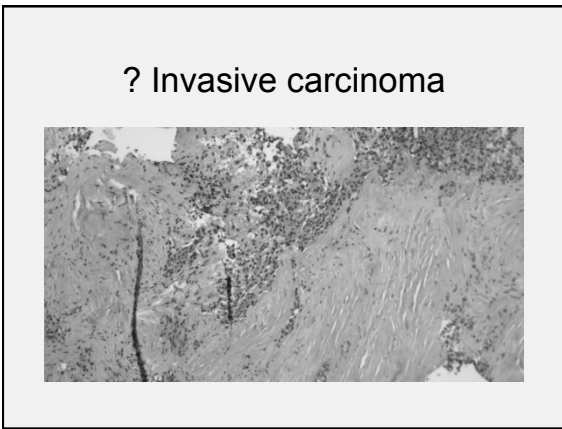
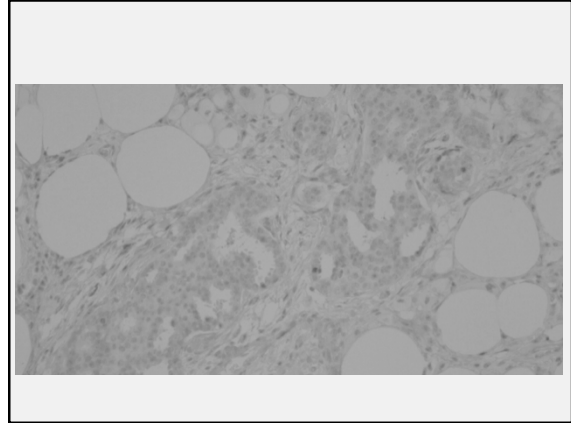
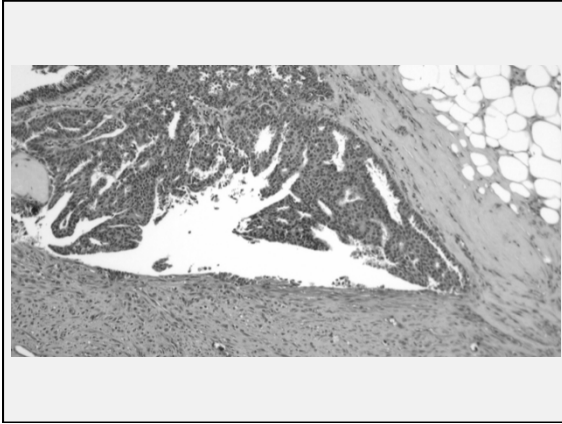


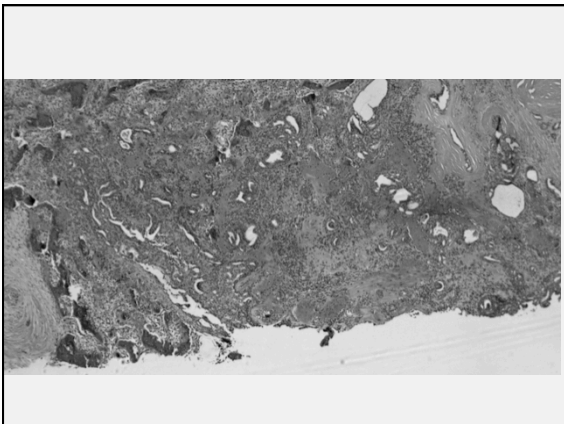
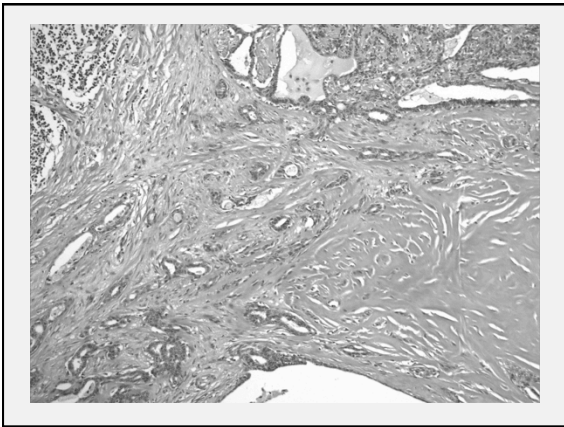
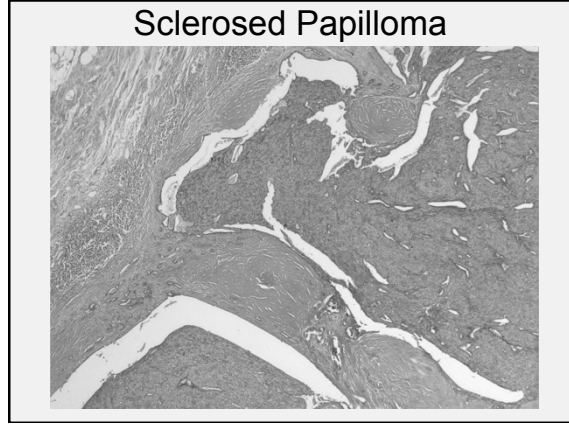
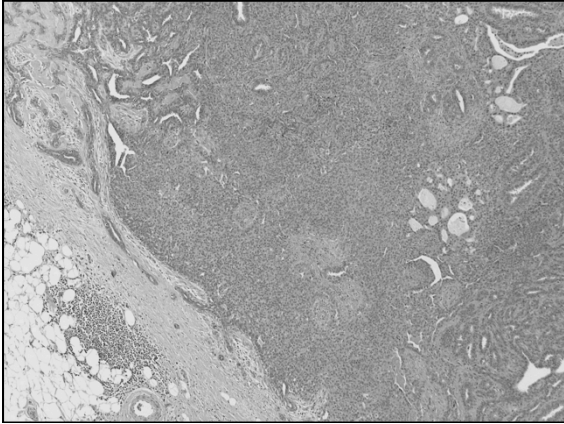


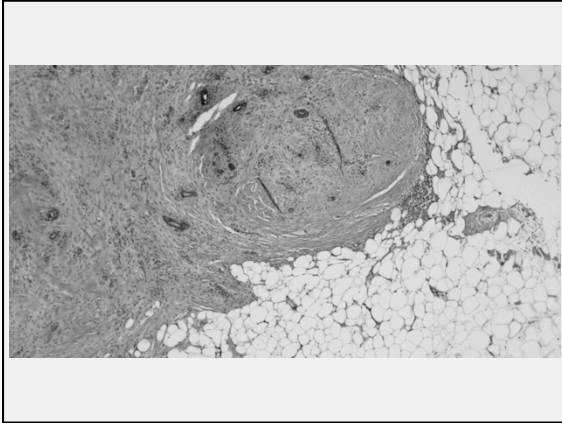
? Is it invasive ?



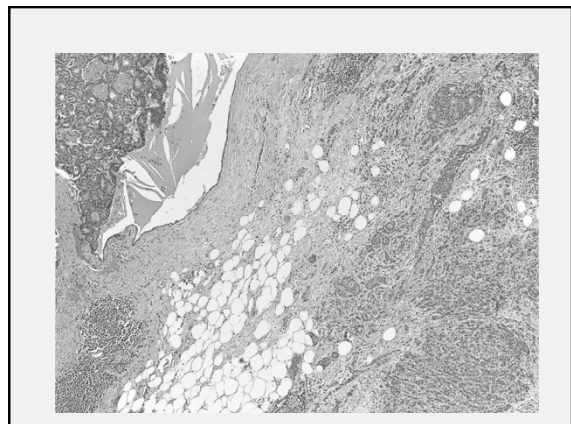
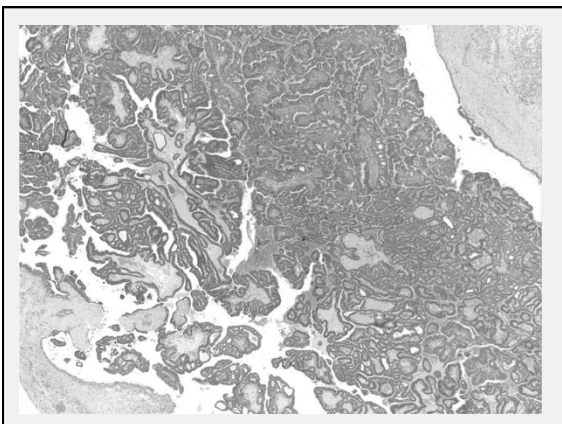
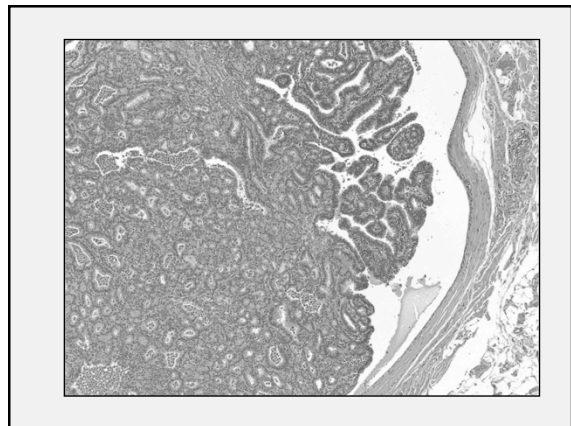




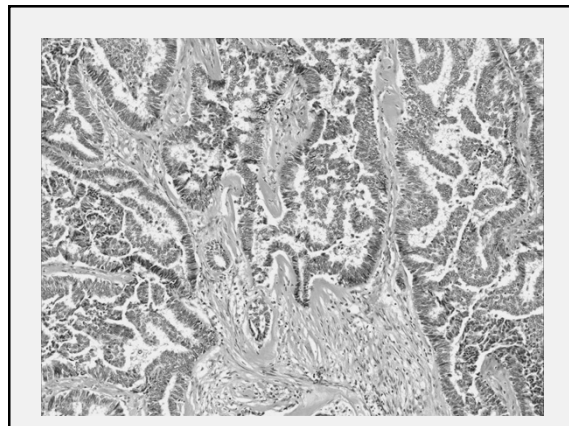
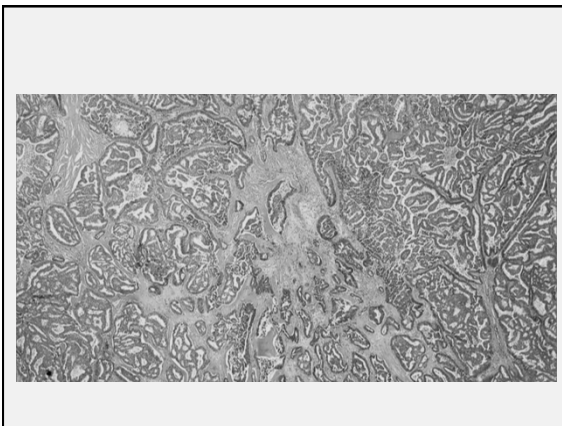
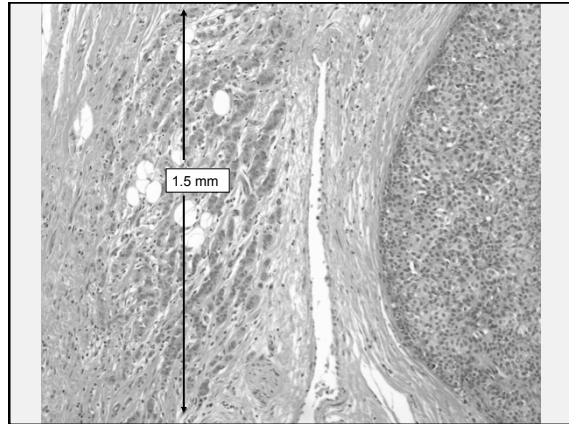
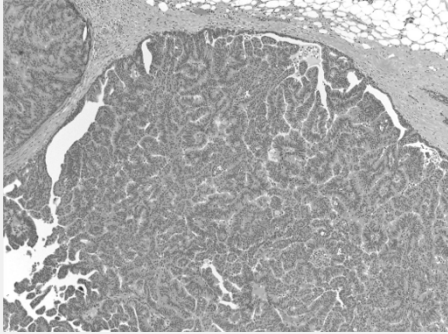




Low grade adenosquamous carcinoma arising in setting of sclerosed papilloma



Expansile Mass



Thank you!